



- Easy to Use and Learn
- Radiation Safety Protection
- Simple and User-Friendly Operation Interface
- Safe for Film, Chips and Electronic Products.

## ▶ Product Introduction

The FSCAN 6550 X-ray inspection equipment is a new security scanning device that utilizes the penetrating power of X-rays to provide rapid, box-free inspection of luggage and belongings. This model is a best-selling product with leading performance parameters, capable of penetrating 40mm steel plates. It features one-button shutdown, automatic detection, energy saving, and environmental protection. It is widely used in public areas such as government agencies, transportation hubs, the logistics sector, courts, prisons, embassies, factories, schools, hospitals, stadiums, and exhibition halls. It is particularly effective in detecting concealed counter-band and flammable/explosive materials (knives, weapons, explosives, fireworks, alcohol/ethanol, etc.) in small items, packages, mail, suitcases, handbags, and backpacks.

## ▶ Features

- Modularity: The internal circuit structure adopts a modular design approach. Rational layout design enhances the device's interference suppression capacity, ensures stable operation, and simplifies maintenance.
- Digitalization: The hardware system utilizes the latest ASIC fully digital solution design and deep acquisition technology. Compared to analog solutions, it offers high integration, strong interference resistance, and clear imaging effects.
- Comprehensive Functionality: Additional functional modules can be customized according to customer requirements via optional dedicated ports.

Examples;

- AI-powered image recognition (hazardous materials warnings)
- Camera integration solutions (person-baggage linking)
- Package barcode association
- UPS power supply

## ▶ Functions

Image Processing Functions:

Color/Black and White, Edge Enhancement, High Penetration, Low Penetration, Super Enhancement, Organic Matter Removal, Inorganic Matter Removal (Metallic Appearance Only), Image Inversion, Brightness Enhancement, Darkening, Grayscale Scanning, Zoom, False Color, Image Restoration, Image Saving

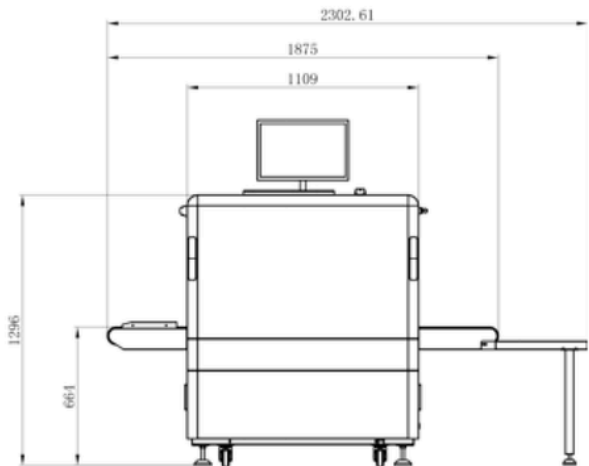
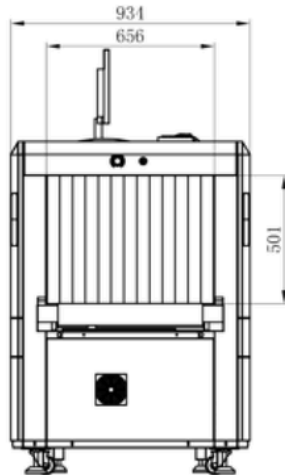
System Functions:

Initial Self-Test, Multi-Level User Management, Image Management, TIP (Threat Image Projection) Management, Curve Diagnosis, Keyboard Diagnosis, Device Information Query, Multi-Format Image Export, OSD (On-Screen Display) Operation, Image Mirroring, 1-64x Seamless Zoom, Magnifier, Operator Training, Precise Image Capture, Tunnel Clearance Reminder, Remote Control Software, One-Button Shutdown

### Parameters

| Category               | Parameter                      | 6550A                                    | 6550C                                    |
|------------------------|--------------------------------|--|--|
| External Dimensions    | Channel Size                   | 650mm × 500mm (W×H)                      | 650mm × 500mm (W×H)                      |
|                        | Device Size                    | 1876mm × 934mm × 1300mm (L×W×H)          | 1876mm × 934mm × 1300mm (L×W×H)          |
| Performance Parameters | Wire Resolution                | AWG38 (+0.102mm)                         | AWG38 (+0.102mm)                         |
|                        | Spatial Resolution             | Horizontal: 1.0mm; Vertical: 1.0mm       | Horizontal: 1.0mm; Vertical: 1.0mm       |
|                        | Penetration Ability            | 12mm steel plate                         | 40mm steel plate                         |
|                        | X-ray Source                   | 80-100 kV / 0.5 mA                       | 140-160 kV / 0.5-1.25 mA                 |
| Radiation Dose         | Leakage Dose                   | <0.5 uSv (50mm from device body)         | <0.5 μSv (50mm from device body)         |
|                        | Single Scan Dose               | <5 uGy/h                                 | <5 uGy/h                                 |
| Conveyor Parameters    | Conveyor Height                | 660mm (height from ground)               | 660mm (height from ground)               |
|                        | Conveyor Speed                 | 22 m/s                                   | 22 m/s                                   |
| Imaging Parameters     | Display Size                   | 5 inches                                 | 5 inches                                 |
|                        | Resolution                     | 1920 x 1080P                             | 1920 x 1080P                             |
| General Parameters     | Power Consumption              | 500W                                     | 500W                                     |
|                        | Power Supply                   | AC220V 50Hz                              | AC220V 50Hz                              |
|                        | Noise Level                    | <55 dB (at 1m distance)                  | <55 dB (at 1m distance)                  |
|                        | Operating Temperature/Humidity | 5°C to 40°C / 10% to 90% non-condensing  | 5°C to 40°C / 10% to 90% non-condensing  |
|                        | Storage Temperature/Humidity   | -20°C to 40°C / 0% to 90% non-condensing | -20°C to 40°C / 0% to 90% non-condensing |
|                        | Device Weight                  | 280 kg                                   | 300 kg                                   |

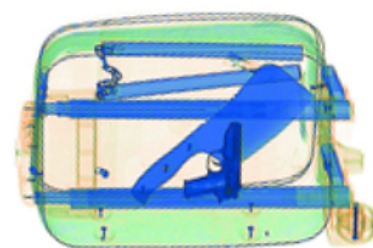
### Dimensions



6550A:



6550C:



### X-Ray Results