

10080 X-RAY INSPECTION



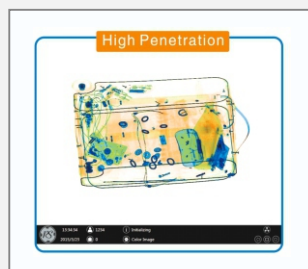
Explosives, Weapons and Contraband
SINGLE SOURCE, MULTI ENERGY



FEATURES

Fully designed for luggage inspection against weapons, explosives, drugs and all other contraband. Widely used in Airports, Railway Stations, Highway Stations, Ports, Bus Station, Custom and other important places.

- ◆ Multi-energy, 1,58 high resolution detector, Penetration 43 mm steel
- ◆ Resolution 40 AWG wire
- ◆ Ultra low X-Ray leakage, complying with domestic and international safety standards
- ◆ Double screen joint display, wider view and longer recognition time
- ◆ Hi-spot for image best contrast and HDA to alert dangerous items.
- ◆ Ultra-thin object scanning
- ◆ Modular design, self diagnosis for important parts like X-Ray generator, detection board, light barrier
- ◆ Explosives and Drugs Auto-inspection
- ◆ Scale to make sure image in original shape without distortion
- ◆ Convenient software and humanized hardware, special keyboard, zoom & move by mouse
- ◆ VMS Video Monitoring System (Black- Box)
- ◆ Temperature and humidity monitoring



10080 TECHNICAL SPECIFICATIONS

PHYSICAL DETAILS

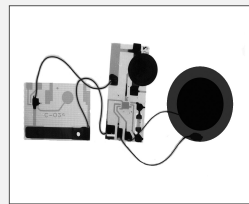
◆ Tunnel Size	1010 mm (W) * 810 mm (H)
◆ Dimensions	3178*1320*1610 mm
◆ Weight	900 kgs net 1000 gross
◆ Temperature	-20 °C / + 50°C
◆ Humidity	95 % non-condensing
◆ Power Consumption	0.8 kVA
◆ Working Voltage	AC 220V (-15%+10%) 50 Hz/60Hz

X-RAY GENERATOR

◆ X-Ray Tube	sealed Oil bath cooling
◆ Tube High Voltage	100-160kV (adjustable)
◆ Tube Current	0.3 - 1.2 mA (adjustable)
◆ Beam Orientation	80° downward
◆ Duty Cycle	100%
◆ Dose per Exam	<2.0 μ Sv

STANDARD FEATURES

- ◆ Auto-Inspection for drugs and Explosives
- ◆ Hi-Spot for image best contrast
- ◆ Auto-Scale to make sure image in original shape
- ◆ Self-diagnosis for X-Ray generator and Detectors
- ◆ Video Monitoring System
- ◆ Organic & Inorganic Stripping
- ◆ Dual Monitor
- ◆ High & Low Density Stripping
- ◆ Color & Black/White imaging
- ◆ Gray Level Scanning



INSPECTION PERFORMANCE

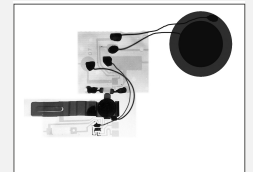
◆ Resolution	0.0787 mm Metal Wire (40 AWG)
◆ Conveyor Speed	0.2 m/s; up to 0.3 m/s
◆ Conveyor Max. Load	180 kg (evenly distributed)
◆ System Noise	<60 dB
◆ Image Resolution	1280 x1024 /24 Bits
◆ Film Safety	ISO 1600 guaranteed
◆ Penetration	43 mm Steel

IMAGE PROCESSING

◆ Processing	Color/ Black & White
◆ Material Classification	Organic & Inorganic & Mineral
◆ and Mixture . Green/ Mineral:	Blue /High density Mat.: black or red
◆ Zoom	1-32 times or any zone
◆ Display	17" High resolution nonflicker
◆ Image Recall	20 screens
◆ Image Storage	100.000 images at least

ADDITIONAL FEATURES

- ◆ Customized Shortcuts
- ◆ Image Retrieval
- ◆ Package Counter
- ◆ Multi-Level User Management
- ◆ User Report Management
- ◆ Maintenance warning
- ◆ Quick Shutdown
- ◆ Multi-Language
- ◆ System Work Time Counter
- ◆ X-Ray Work Time Counter



OPTIONAL FEATURES

- ◆ Threat Image Projection (TIP)
- ◆ Energy Saving Device
- ◆ Operator desk
- ◆ Stainless steel conveyor Extensions

COMPUTER FEATURES

◆ AMD A10 7860k 160 Ghz	4 GB RAM (min)
◆ 1 terabyte HDD	6 USB port
◆ 1024 MB Display card	Win 7 Pro

